



**IRVINE UNIFIED  
SCHOOL DISTRICT**



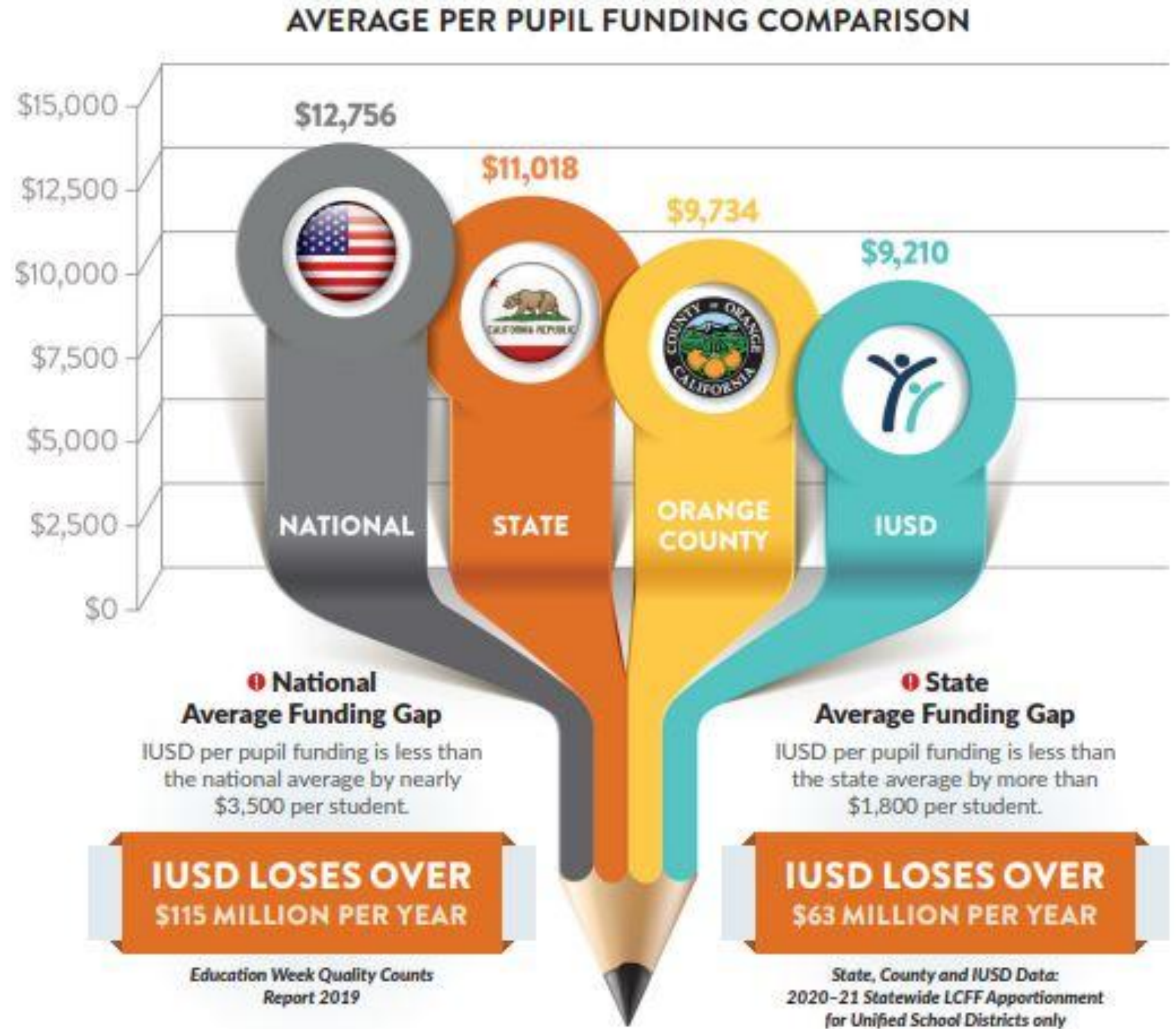
2023-24 LCAP Engagement Partner  
Input Activity

# What is the LCFF

- The state's funding formula for K-12 public schools
- Establishes three categories
  - ❖ Per-Student Base funding
  - ❖ Supplemental
  - ❖ Concentration



The LCFF is weighted to favor districts with high populations of disadvantaged students. As such, IUSD receives substantially lower per pupil funding annually.





# How is the LCAP connected to LCFF?

The LCAP is the District's three year plan for how it will use LCFF funding to align IUSD's strategic planning with our budget to accomplish both state and District goals. This comprehensive process enables the District to serve all IUSD students.



# Each School District's LCAP must focus on 8 state priority areas:

**1. Basic Services**

**2. Academic Standards**

**3. Parent Involvement**

**4. Student Achievement**

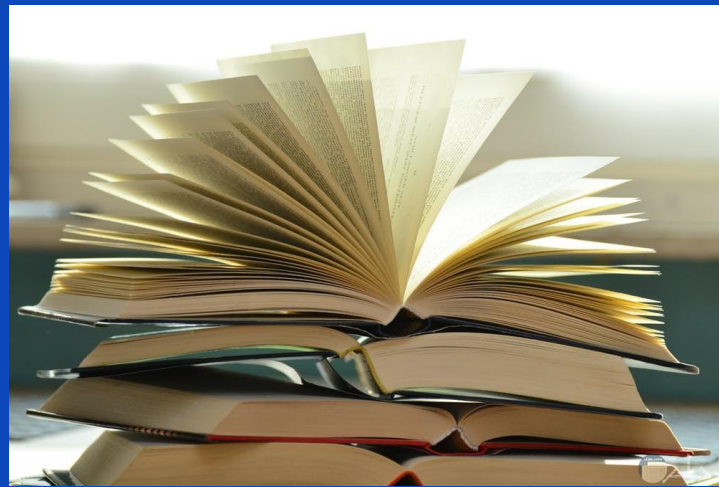
**5. Student Engagement**

**6. School Climate**

**7. Course Access**

**8. Other Outcomes**

# State Priorities Addressed and Grouped into 3 Focus Areas



## Conditions of Learning

---

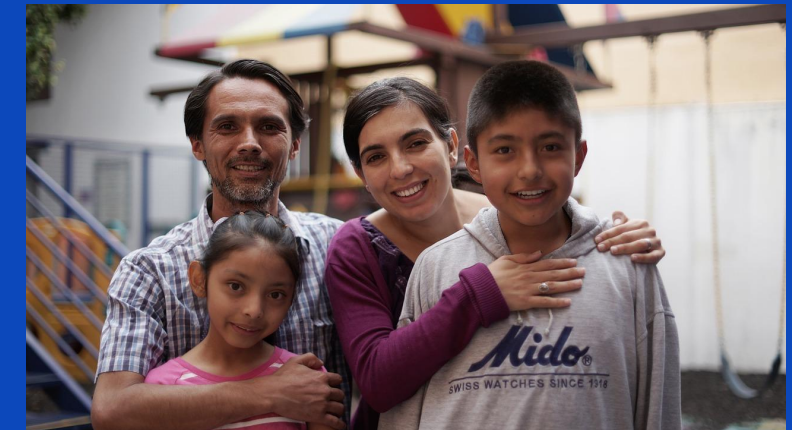
1. Basic Services
2. Academic Standards
7. Course Access



## Student Outcomes

---

4. Student Achievement
8. Other outcomes



## Student/Parent Engagement

---

3. Parent Involvement
5. Student Engagement
6. School Climate

# The District addresses the 8 state priorities through:

---

- ❖ **3 District Goals**
- ❖ **24 Action Items**



# Goal #1

Create a positive school climate and  
system of supports  
for student personal and academic  
success



# Goal #1 Action Items with One-Time or Split Funding

- ❖ Summer School
- ❖ Summer School Athletic Augmentation
- ❖ Project Success/Guidance Assistants/Wellness Support
- ❖ Elem Resource Counselors (ERC)
- ❖ Optimistic Advantage
- ❖ Graduation Support

**Goal 1: Create a positive school climate and system of supports for student personal and academic growth**

LCAP Action Description	Total	One-Time	Ongoing	Other
<p><b>1.2.A: Summer School:</b> Support summer school programs by funding a high school and two middle school sites. Expanded programming will result in increased offerings for remediation, acceleration, blended learning and math bridge classes.</p>	\$600,00	\$200,00	\$400,00	
<p><b>1.2.B: Summer School - Athletic Augmentation:</b> Provide base funding for Athletic Director and Athletic Trainer positions to ensure adequate supervision and safety for the IUSD Summer Athletic Camp program.</p>	\$30,000		\$30,000	
<p><b>1.4.A: Project Success and Guidance Assistants:</b> Project Success are part-time paraprofessionals at high schools who work closely with counselors and Mental Health Specialists to provide social-emotional support to students in small groups. Guidance Assistants are part time paraprofessionals at elementary schools who provide social-emotional support to students through classroom implementation of the Second Step program, Second Step small groups and student coaching during unstructured times.</p>	\$335,000	\$335,000		
<p><b>1.4.D: Elementary Resource Counselors:</b> Trained staff at elementary schools, who provide social-emotional support to students through short-term, solution-focused individual or small group counseling, resource referrals and linkages, and parent and staff workshops.</p>	\$1,725,000		\$1,475,000	\$250,000- Irvine Public School Foundation
<p><b>1.7.A: Optimistic Advantage:</b> A series of interactive modules designed to help students build essential capacities so they are prepared for the complex world they will enter as young adults and professionals. This includes supporting the skills students need to be college and career ready, as well as engaged citizens. Skills that will help them become resilient and resourceful learners, who are able to adapt, pivot and demonstrate grit as they face academic and other challenges.</p>	\$100,000	\$100,000		
<p><b>1.8.A Graduation Support:</b> Supports the needs of students as they experience an increase in the graduation requirements in the areas of science and math, beginning with students who will graduate in 2027. At all levels (elementary, middle, and high school) intervention/support classes, inclusion/collaboration classes, professional learning, curriculum and software purchases will provide needed support for students.</p>	\$949,500	\$133,818	\$460,000	\$355,682- Instructional Materials/Stimulus/Sites

# Goal #2

Ensure all students attain proficiency in the state standards through access to rigorous and relevant learning tools, resources and skills for all staff and students

## Goal #2 Action Items with One-Time or Split Funding

- ❖ Professional Learning Communities
- ❖ Curriculum/Special Ed. TOSAs
- ❖ Stipends for Mentors/Curriculum Development
- ❖ Education Technology TOSAs
- ❖ High School (HS) Technology Mentors
- ❖ Computer Match Funds
- ❖ Technology Maintenance Funds
- ❖ Physical Education Support

Goal 2: Ensure all students attain proficiency in the state standards through access to rigorous and relevant learning tools, resources and skills for all staff and students				
LCAP Action Description	Total	One-Time	Ongoing	Other
<b>2.2.A: Part-time Facilitator Teacher Coaches for Professional Learning Communities:</b> Facilitator coaches provide on-site timely facilitation and support to build the capacity of site-based Professional Learning Community (PLC) teams. This funding covers one PLC Facilitator Coach (FC) (released for .20 Full Time Employee or FTE) per each elementary school site, four PLC FC positions (stipend only) to cover Humanities and STEM departments at each middle school and eight PLC FC positions (stipend only) to cover core content departments (ELA, Math, Science, HSS) at each high school.	\$1,206,000	\$536,000	\$670,000	
<b>2.3.A: Curriculum TOSAs:</b> Teachers on Special Assignment develop resources, curriculum, and professional learning to support classroom teachers in all curricular areas across grades TK-12. Curriculum TOSAs are an essential component of curriculum and instructional support in IUSD. These positions include general education, special education, assessment and professional learning TOSA support.	\$1,820,000	\$260,000	\$1,040,000	\$520,000- Educator Effectiveness Funds
<b>2.3.B: Teacher Mentors/Curriculum Development Stipends:</b> Classroom teachers serve in mentorship positions to work additional hours to support curriculum work, mentor/coach teachers and develop/implement professional learning.	\$500,000			\$500,000- Educator Effectiveness Funds
<b>2.3.C: Education Technology TOSAs:</b> Education Technology Teachers on Special Assignment (TOSAs) provide professional learning (in-person and on-demand resources), guidance and support for teachers who are interested in integrating technology in their classrooms. The EdTech TOSAs focus on elementary and middle school support for high-impact use of technology in schools. They also help teachers design lessons and leverage new facilities and technology to engage students and deepen learning.	\$390,000		\$390,000	
<b>2.3.D: High School Technology Mentors:</b> Each high school receives stipends to provide instructional technology professional learning and support. Because the EdTech Mentors are part of the school site staff, they are immediately available to assist teachers who want to increase or refine their use of technology in the classroom. EdTech Mentors connected to their schools uniquely position themselves to provide personalized support and guidance in educational technology.	\$50,000		\$50,000	
<b>2.4.A: Computer Match Program:</b> These funds augment the technology match program. Funding is distributed to sites based on enrollment and percentage of low-income students. Sites use technology match funding to purchase staff and student desktops, laptops, Chromebooks and other devices. Match funding also helps sites add to and maintain their computers and related equipment.	\$500,000		\$500,000	
<b>2.4.B: Technology Maintenance Fund:</b> IUSD has funded projector replacements and infrastructure upgrades with one-time funds. Some of those upgrades were made over five years ago. Audio-visual, networking and server equipment generally has a usable life of five years. This fund provides for emergency replacement of failing technology that was previously funded with one-time funds. Although this is not sufficient to fund the ongoing refresh needs, this technology maintenance fund is vital to keeping our infrastructure healthy.	\$600,000		\$600,000	
<b>2.6.A: Elementary PE Paraprofessionals:</b> Classified staff hired to support physical education. PE Paraprofessionals also release teachers for participation in Professional Learning Communities, ensure students are meeting weekly PE minutes, and providing quality standards-based program.	\$867,000		\$567,000	\$300,000- Educational Partnership Fund
<b>2.6.B: Physical Education Support:</b> Physical education educators and paraprofessionals are supported in their efforts to collaborate and continue to build quality physical health activities for students across all grade levels through a part-time administrator and teacher on special assignment. This includes a shared equipment checkout system, development of lesson plans, hiring and training of paraprofessionals, and PLC coordination.	\$65,000	\$65,000		

# 2023-24 Proposed Action Items

# Goal #3

Address barriers limiting student participation in programs and provide equity in allocation of resources

# Goal #3 Action Items with One-Time or Split Funding

- ❖ Impacted/Intervention Section (grades 7-12)
- ❖ MS Stipends for Student Support/Safety
- ❖ HS Allocations for Student Support/Safety
- ❖ Online Tutoring Support (grades 6-12)
- ❖ Learning Labs
- ❖ Reduce Induction Fees
- ❖ Innovative Furniture
- ❖ CTE/ROP Sections

**Goal 3: Address barriers limiting student participation in programs and provide equity in allocation of resources**

LCAP Action Description	Total	One-Time	Ongoing	Other
<b>3.1.B: Increased Secondary Allocation to Support Impacted and Intervention Classes:</b> Provides additional sections for middle and high schools in order to continue to provide intervention courses and meet student enrollment needs.	\$1,230,000	\$1,230,000		
<b>3.2.D: Middle School Support:</b> Targets middle schools by funding teacher leaders in the area of supervision of students, supporting: student learning opportunities, special education instructional assistants and providing opportunities for teachers to develop ongoing leadership skills by leading important school tasks (testing, survey development, PLC support, wellness programs etc.) Each middle school would have the flexibility to utilize stipends for teachers in support of students and their safety.	\$50,000	\$50,000		
<b>3.2.E: High School Support:</b> Targets high schools by funding teacher leaders in the area of supervision of students, supporting: student learning opportunities, special education instructional assistants and providing opportunities for teachers to develop ongoing leadership skills by leading important school tasks (testing, survey development, PLC support, wellness programs etc.) Each high school would have the flexibility to utilize stipends and/or sections for teachers in support of students and their safety.	\$285,000	\$285,000		
<b>3.2.F: Equal Opportunity School Program:</b> The partnership with Equal Opportunity Schools (EOS) provides expertise, knowledge, industry research with data analysis, and the tools and technology for our high schools to address and close their equity and achievement gaps. Equal Opportunity Schools' mission is to ensure students of all backgrounds have equal access to our most academically intense high school programs—and particularly that low-income students and students of color have opportunities to succeed at the highest levels.	\$90,000		\$90,000	
<b>3.3.D Paper Online Tutoring:</b> Consultant will provide high school students with access to qualified tutors in core subject areas. Students will request and engage with tutors online through a program in their Canvas course websites. In addition, students may upload writing assignments and receive more detailed feedback and coaching. The tutoring program allows teachers to view which students seek help, the specific topics they struggle with, and recommendations for additional support.	\$435,000	\$235,000	\$200,000	
<b>3.3.E Learning Labs:</b> Learning Lab is a course designed to help students recover credits for one or multiple semester-long courses within a semester. The course utilizes the Edgenuity online learning system to provide curriculum and	\$100,000		100,000	
<b>3.4.B: Reduce Induction Fees:</b> Reduce induction fees for new teachers to continue to attract high quality teachers in support of our growing district.	\$100,000			\$100,000-Educator Effectiveness Funds
<b>3.5.A: Innovative Furniture:</b> Provide funding for schools to innovate their collaborative spaces, media centers, classrooms, STEAM labs, innovative labs, etc.	\$100,000	\$100,000		
<b>3.6.A: Career Technical Education (CTE)/Regional Occupation Program (ROP) Sections:</b> The Career Technical Education (CTE) program supports school sites in the development and implementation of standard-based courses in various industry sectors that provide students with authentic learning experiences conducive to long-term college and career success. This includes the development and acquisition of learning spaces and industry equipment to support CTE courses. In addition, CTE teachers are exposed to ongoing professional development by business and college professionals. Similarly, students are provided fieldtrip opportunities and exposure to industry professionals in the form of speaking engagements, internships, and mentorships. The impact of the CTE program includes enhancing Irvine Unified's ability to provide a diverse selection of college and career programs such as Culinary, Engineering, Medical, and Business to all students in order to increase their academic and workforce skillset, while increasing high school graduation rates, college admissions and overall student engagement.	\$217,000	\$217,000		

# 2023-24 Proposed Action Items





1

Participants



1

Thoughts



0

Ratings



0

Ratio

6:30 <sup>+</sup> <sub>-</sub> ▶



tejoin.com

622-987-253

As you review current LCAP investments covered by one-time or split funds, what are your thoughts, questions, or feedback about action items that should be maintained, expanded, decreased, or new items to be considered.



Welcome



Answer questions



Share thoughts



Rate thoughts



View results



Complete

## Here's how it works



View the introduction



Answer a few quick questions



Share your thoughts



Rate thoughts shared by others



View thoughts important to the group

Next

Welcome

Answer questions

Share thoughts

Rate thoughts

View results

Complete

## Introduction

Irvine Unified School District LCAP Proposed Renewed Investments 2023-24 ATTACHMENT #1				
Background: The LCAP is designed in an effort to provide engagement partners details on specific actions and their anticipated impact on the district. Actions are now grouped by categories to improve clarity. Actions listed below describe where new funds will be allocated for the 2023-24 school year. (This does not reflect the many actions that are already fully funded within the LCAP.) Actions below include one-time funded actions that require renewal of funding.				
Goal 1: Create a positive school climate and system of supports for student personal and academic growth				
LCAP Action Description	Total	One-Time	Ongoing	Other
<b>1.2.A: Summer School:</b> Support summer school programs by funding a high school and two middle school sites. Expanded programming will result in increased offerings for remediation, acceleration, blended learning and math bridge classes.	\$600,00	\$200,00	\$400,00	
<b>1.2.B: Summer School - Athletic Augmentation:</b> Provide base funding for Athletic Director and Athletic Trainer positions to ensure adequate supervision and safety for the IUSD Summer Athletic Camp program.	\$30,000		\$30,000	
<b>1.4.A: Project Success and Guidance Assistants:</b> Project Success are part-time paraprofessionals at high schools who work closely with counselors and Mental Health Specialists to provide social-emotional support to students in small groups. Guidance Assistants are part time paraprofessionals at elementary schools who provide social-emotional support to students through classroom implementation of the Second Step program, Second Step small groups and student coaching during unstructured times.	\$335,000	\$335,000		
<b>1.4.D: Elementary Resource Counselors:</b> Trained staff at elementary schools, who provide social-emotional support to students through short-term, solution-focused individual or small group counseling, assessment, and behavior and social skills	\$1,725,000		\$1,475,000	\$250,000- Irvine Public School Foundation

We would like to take this opportunity to get your thoughts and perspectives about LCAP action items for the 2023-24 school year. Please take a few minutes to review the LCAP action items that utilize one-time or split funds and are considered annually by the Board of Education. It is important to note that this activity is addressing one-time investments and does not reflect action items that are already fully funded in the LCAP.



Welcome



Answer questions



Share thoughts



Rate thoughts



View results



Complete



## Share thoughts

### Student Support Services asks

As you review current LCAP investments covered by one-time or split funds, what are your thoughts, questions, or feedback about action items that should be maintained, expanded, decreased, or new items to be considered.

Share your first thought

150 characters remaining

Say why it's important

150 characters remaining

Rate thoughts

Submit your thought

ThoughtExchange: <https://tejoin.com/scroll/622987253>

Text 622-987-253 to phone number 728-55 to get link to participate in this Exchange

Welcome

Answer questions

Share thoughts

Rate thoughts


View results

Complete

Rating progress:  10/10



As you review current LCAP investments, please provide your thoughts, questi... [more](#)

**Student Mental Health is very important**   
Students being able to have a well balance attitude and emotional well being is important for learning





# 2023-24 LCAP Activity

<https://tejoin.com/scroll/622987253>



**IRVINE UNIFIED  
SCHOOL DISTRICT**

---

**Questions?**